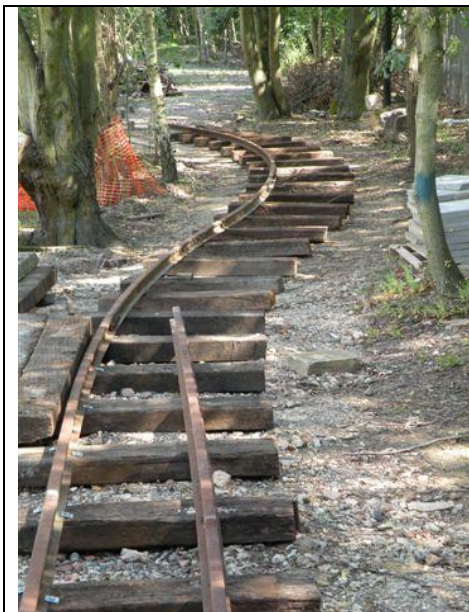


## Getting Involved with the Hampshire Narrow Gauge Railway Trust at the Bursledon Brickworks Industrial Museum

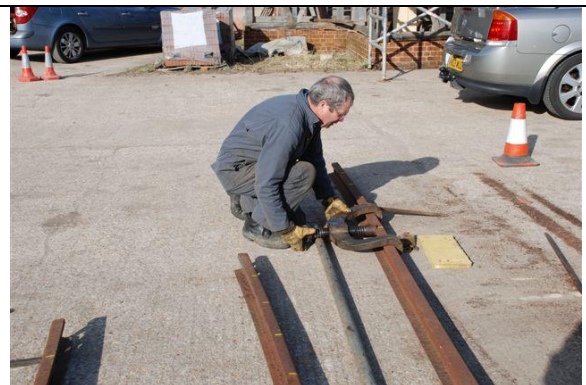
The construction of a Narrow Gauge Railway and a 7 ¼ inch gauge miniature railway projects involved our members in a wide range of activities the following pictures provide a good selection of the work involved.



Here we have Ron and Mick regrading and rolling the approach to the newly installed road crossing.



Further along the track bed rails are being laid each of these curved rails has to be shaped by hand using a 'Jim Crow' clamps to bend the rails.



In the above picture Ron is moving the 'Jim Crow' 1ft along the rail to bend the small section of the rail this he repeats a foot at a time along the 30 ft length to achieve the radius required.

Whilst the Narrow Gauge was being constructed others were busy working on the 7 ¼ inch gauge miniature railway

A siding is under construction to enable the old Boiler room to be used as a temporary engine shed.



Here Ken is laying a second track into the station to allow the operation of two trains on the single line track.



Here Kevin Derek and Roy are installing a set of points to provide a siding. These rails and points are all custom made by the members.

More recently work has begun on preparing the track bed for the provision a passing loop either end of the narrow gauge line to facilitate single engine operation.



With a 360 digger kindly provided by A4 Hire Ltd of Hungerford the required landscaping for the passing loop at the end of line at the site Main Gate was soon achieved.



Here the member volunteers are laying ballast on the proposed route of the passing loop.